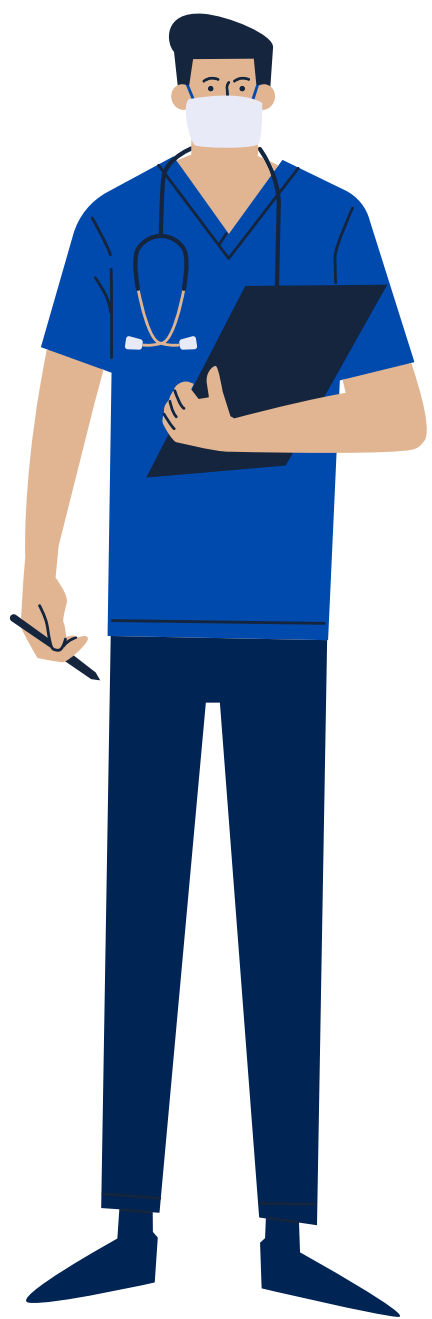


MOVING DURING COVID-19

How to move to The Piper Assisted Living and Memory Support during a pandemic

We are accepting new move-ins to The Piper Assisted Living & Memory Support. However, the process is a little different than what we've done before as we have strict COVID-19 precautions in place. We're here to walk you through it!



TOURING

We are not doing traditional tours right now. However, you can take a virtual tour on our website and look through photos of our Households. We can also arrange a FaceTime tour where we will "walk through" The Piper with you and answer questions.

MOVE-IN DAY

Residents will first move into a furnished apartment in our Isolation Unit for 14 days. They will be monitored twice daily and tested for COVID-19 before moving to their permanent apartment. We can set up their apartment or we can FaceTime with you to decorate however you prefer. All personal belongings and furniture will be sanitized.

APPLICATION

We require an application to be completed along with doctor's orders prior to move-in. We can email you the application in advance and we can obtain the doctor's orders.

ASSESSMENT

Right now, we are not doing in-person assessments prior to moving in. Instead we can do a FaceTime assessment or we can do an in-person assessment on move-in day.

VISITING

We currently have a No Visitor Policy in place. However, we do offer scheduled "visits" through our lobby window. Residents are inside and families stay outside at a 6-foot distance, while wearing face masks.

